

4" Four-Digit Clock Flush

DC-40F

DC-Digital™ Clocks
The True Two Wire System



Features

- Only two wires required
- Solid state
- Surface or flush mount
- Low voltage operation
- 5-year warranty
- 4" super bright display
- Patented clock design
- 24 or 120 volt AC operation

Specifications

- Display Four digit; seven segment; red LED display
- Case Steel; Front 18"W x 9"H x .125"D Back Box; 14.5"W x 7.25"H x 2.75" D
- Weight 5.8 pounds
- Power Source DC-40F 24VDC at 350mA
AC-40F 24VAC 60Hz at 350mA
AC-40FA 120VAC 60Hz at 65mA
- Operating Temp. 0° to 49° Celsius (32° to 120° Fahrenheit)
- Case Finish Black powder coating
- Cabling Two wires

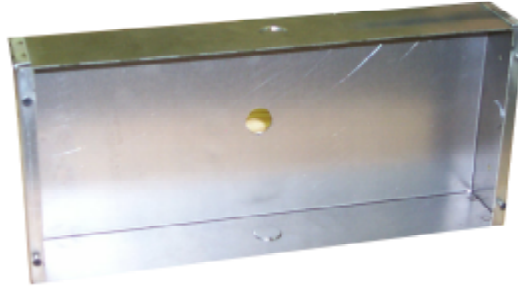
DC-Digital Clock Description

The DC-Digital Clocks are designed to run and reset off of two wires, as opposed to most digital clocks, which require four wires. This patented design can be used in either existing buildings or new construction. Model DC-40F is a 4.0" display, that runs off of DC power. Model AC-40F and AC40FA are 4.0" displays, that run off of AC power.

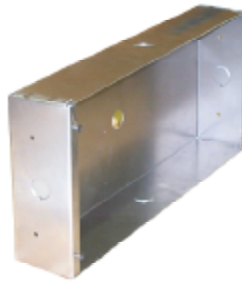
DC-Digital Clocks can be used as stand-alone, non-system clocks, or can be linked via most master clocks to form a hourly and 12 hour automatic correction system. Using DC-Digital accessories, these clocks may be adapted to existing flush-mounted back boxes.

DC-Digital DC-40F Clock Dimensions

Back View



Side View



- For the DC-40F model, connect the red cable to the positive power supply lead and the black cable to the negative on the 24VDC power supply lead. If the polarity is reversed, the clock will simply stay in the correction mode.
- For the AC-40F (24VAC) model, connect the black and red cables to the 24VAC power supply lines.
- For the AC-40FA (120VAC) model, connect the two black cables to the 120VAC supply lines.
- Industrial Electronic Service, Ltd. will not warranty any DC-Digital clock that has been connected to a power supply other than what are specified.